

GOLDEN BELT

COMMUNITY FOUNDATION



BUILDING A
FUTURE THAT'S

thriving

THIS IS WHERE *magic*

IS MADE.

How are you making the Golden Belt of Kansas the community of our dreams?



Golden Belt Community Foundation helps turn our region's dreams into reality. We are the hub for philanthropy in Barton, Pawnee, Rush, and Stafford counties. We simplify giving and amplify impact by connecting individual donors to causes they care about, and we use the power of collective giving to address our region's greatest challenges.



VISION:

Creating thriving communities where everyone has the opportunity to succeed and collective efforts lead to a lasting positive future.



MISSION:

We inspire individuals to collaborate and create a thriving future, fostering connections with family, friends, and neighbors, while creating legacies that endure.



VALUES:

Innovation: We believe it often takes bold innovative thinking and actions to find the imaginative solutions that spark lasting change.

Collaboration: We believe we are stronger working together in order to leverage the resources of diverse partners and maximize our organizational capacity and community impact.

Fair & Equitable: We believe fairness and equality develops an environment of trust and respect with just, transparent and inclusive systems that lead to more effective practices.

Integrity: We believe integrity is at the heart of a relationship where commitments are honored and the spirit of generosity can be nurtured.

Strategic: We believe thinking and acting strategically keeps us focused and efficient, moving intentionally toward an agreed upon vision.

Creativity: We believe that the power of imagination is greater than the challenges we face. We celebrate what works. We pursue the new. We learn as much from failure as we do from success.

Knowledge: We strive to be a source of knowledge for the regions we serve. To exemplify this we consistently train and educate our Board and staff in order to better serve our donors and constituents.

Learn more about us and how you can be part of the magic.
Visit us at goldenbeltcf.org.



GOLDEN BELT
COMMUNITY FOUNDATION



giving TUESDAY

A Record Year of Generosity

In 2024, the Golden Belt Community Foundation (GBCF) celebrated its 11th Giving Tuesday campaign, raising an impressive \$533,217 from over 1,000 gifts in support of 115 local charitable organizations and endowment funds.

Held each year after Thanksgiving, Giving Tuesday is a global day of generosity that empowers individuals to give back to causes they care about. GBCF invited organizations across Barton, Pawnee, Rush, and

Stafford counties to participate, with many choosing to use their gifts as grants for immediate impact, while others invested in long-term endowment growth.

"This year's campaign allowed us to award over \$500,000 in grants to strengthen our communities," said Mackenzie Mitchell, Development and Communications Coordinator.

Great Bend earned the 2024 Most Generous City Award based on per

capita giving, and received a \$1,000 grant for a local project – updating the Heizer Park sign.

"Thank you for your support, participation, and spreading the word about Giving Tuesday," said Mitchell. "Giving Tuesday couldn't happen without you."

Looking ahead, Giving Tuesday 2025 will take place on December 2.



I always get excited to see the numbers and how the communities show up for some great organizations. Thank you Golden Belt Community Foundation team for all your hard work!

KIMBERLY BECKER

*Move Your Mountain
Coaching and Consulting*



Group of amazing community members at the Great Charity Give Back.

PLANNING FOR *tomorrow*

The Purpose of Estate Planning

Golden Belt Community Foundation partnered with local experts on community-wide estate planning presentations to help citizens plan not just for today but for tomorrow. When people hear the term *estate plan*, they often think they don't have enough assets to worry about planning. But the truth is, estate planning is important for anyone who wants to have a say in what happens to any of their belongings—and loved ones—after they're gone.

At its core, an estate plan ensures your wishes are followed when it comes to your finances, property, healthcare decisions, and guardianship of minor children. Without one, these decisions



2025 SESSIONS

- ✦ **Rush Center, KS** - March 6
- ✦ **Larned, KS** - March 27
- ✦ **Great Bend, KS** - April 2

may fall to the courts, which can lead to delays, disputes, and outcomes that may not reflect your intentions.

A solid estate plan typically includes a will, a power of attorney, and healthcare directives. It can also include trusts that help manage your assets efficiently and even reduce tax burdens for your heirs.

Estate planning isn't just about death—it's also about preparing for the unexpected. If you become incapacitated, having a plan in place can ease the burden on your family and ensure decisions are made according to your values.

Bottom line: No matter your age, wealth, or family status, having an estate plan is one of the most thoughtful and responsible things you can do for the people you care about.



Estate planning isn't just about death—it's also about preparing for the unexpected.



A Legacy for Hoisington's

future

In early 2020, just before the world would change in so many unexpected ways, something powerful quietly took root in the heart of Hoisington. Thanks to the vision and leadership of community members, the City of Hoisington partnered with the Golden Belt Community Foundation to launch the City of Hoisington Quality of Life Endowment Fund—a bold investment in the future.

What began with a generous seed gift of \$147,500 has now grown into a \$1 million fund dedicated to supporting quality of life projects throughout the city. From new play equipment to vital infrastruc-

ture upgrades, the endowment is already making a visible impact—and it's just getting started.

Over the past five years, this growing fund has supported upgrades to two of Hoisington's beloved parks, including a new playscape at Bicentennial Park, dual zip lines and a swing set at Heritage Park, and soon, a new gaga ball pit—a favorite among local kids—will join them. Beyond parks, the fund has also helped provide critical equipment for the city's water system and contributed to improvements at the City Hall gymnasium, a hub of community activity.

100



Mayor Chris Kinman believes deeply in the endowment's long-term value. "The endowment will help to fund quality of life projects for generations to come," he said. "As the endowment grows, so does the ability to enhance our community."

That sentiment is echoed by City Manager Jonathan Mitchell: "Over the years, city officials and staff will come and go, but this endowment will last forever," he said. "A contribution to the endowment is an investment in our community. As the fund grows, our community grows."

The City of Hoisington's Quality of Life Endowment represents more than just dollars—it represents hope, planning, and the belief that small towns can thrive when people come together to care for each other.

This endowment is Hoisington's promise to keep going far—together.



A contribution to the endowment fund is an investment in our community. Long after we're gone, this fund will still be working to make Hoisington a better place.

JONATHAN MITCHELL
Hoisington City Manager



WHAT IS AN ENDOWMENT?

When you create a fund through Golden Belt Community Foundation, you have the opportunity to benefit the community forever with a permanent endowment. Most endowments are invested for long-term growth. They are designed to keep the principal amount intact while using a portion of the investment income for charitable purposes. In the case of the community foundation, earnings from the endowment are used to make grants to honor donors' wishes and address community needs. When you give to an endowment, your gift—and all future earnings from your gift—is a permanent source of community capital, helping do good work today and in the future. As the fund grows, so will the portion available annually for charitable purposes.



Want to learn more?

Contact us at 620.792.3000
or gbcf@goldenbeltcf.org.



LARNED COMMUNITY GARDEN

grows Stronger

with New Facility



In 2009, the first seed was planted at the Larned Community Garden due to a grant from the Golden Belt Community Foundation. Now, thanks to over \$100,000 in generous grant funding, the Larned community, through a partnership with Larned High School,

Civic Pride, Golden Belt Telephone, and the Golden Belt Community Foundation enhanced its community garden with a much-needed storage facility and greenhouse. The new structure includes a bathroom, display stand and Wi-Fi, replacing the previous stand that was destroyed in a severe storm.

Community gardening is associated with higher life satisfaction and reduced stress.

— National Institutes of Health



This upgrade allows volunteers to properly store harvested produce, helping to preserve its freshness and extend its shelf life. As a result, residents will continue to enjoy the



Grant funding helped the Larned community garden to make much-needed improvements. Now, volunteers can store harvested produce, more than one ton of fruits and vegetables each year.



The Larned Community Garden has a new storage facility and greenhouse.

garden's offerings, over a ton of fruits and vegetables grown each year.

As local Nurse Practitioner Dr. Jenny Manry shared, "Community gardens are more than just green spaces. They are great community assets. They foster new relationships, provide for physical and mental activity while increasing the access to nutritious food."

With this new facility, the Larned Community Garden is growing stronger—feeding bodies, minds, and hearts.

COMMUNITY GARDENING

has been shown
to reduce stress levels by

60%

— WorldMetrics.org

GROWING GOODNESS

Community gardens like Larned's do more than provide food. They connect people, promote healthy lifestyles, and support sustainability.

- **Healthy Eating:**
Access to fresh, organic produce improves diets—especially in areas with limited grocery options.
- **Community Bonds:**
Gardening together builds friendships and strengthens neighborhoods.
- **Education:**
Gardens serve as hands-on classrooms for all ages.
- **Environmental Benefits:**
They enhance air quality, reduce food waste, and support local ecosystems.
- **Well-Being:**
Gardening supports mental and physical health.

NEIGHBORHOOD YOUTH



GRANT AWARD

A \$10,000 grant from the **KHF Children's Health Endowment Fund** at the Golden Belt Community Foundation helped support the installation of sliding windows in a new, multi-use concession and restroom facility at Brown Park. While this may sound like a small detail, these windows are a key part of a larger vision—one that gives local youth hands-on experience taking orders, handling money, and practicing customer service, all while building real-life communication and math skills in a supportive setting.

This new facility replaces a more than 60-year-old cinderblock structure that no longer met community needs or accessibility standards. The updated space was designed with the future in mind, featuring ADA-compliant restrooms, increased stall capacity, heating and air conditioning, and dedicated

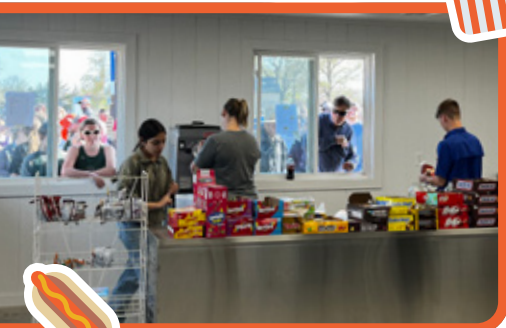


The facility features enhanced restrooms and dedicated locker rooms.



locker room space for two teams and referees. It will serve not only as a concession stand during games, but also as a year-round resource for school groups, youth sports, and community events at the Sports Complex and Brown Park.

This impactful project was made possible through the collaboration of multiple funding partners—each committed to investing in healthy, vibrant spaces for young people and families. The Golden Belt Community Foundation is proud to play a role in bringing this kind of community-centered project to life.



Concessions are just one of the functions of the new multi-use facility in St. John.

Do you have a project that strengthens your community?

Visit goldenbeltcf.org/grants to learn more about available grant opportunities.





Van Transports Ellinwood Residents

The Ellinwood Commission on Aging Inc. is excited to have purchased a 2017 Dodge Grand Caravan for the Ellinwood Public Transportation! It was purchased with grants of \$15,000 from the CPI Quality of Life Barton County Fund and Donor Advised dollars from the Golden Belt Community Foundation, and \$15,000 from other donations.

Ellinwood Public Transportation is provided Monday-Friday, 8 a.m. to 5 p.m. to any Ellinwood resident who does not have a vehicle or cannot drive. Call the Heritage Senior Center to reserve a ride or for additional information.

BIG HEARTS, *big impact!*

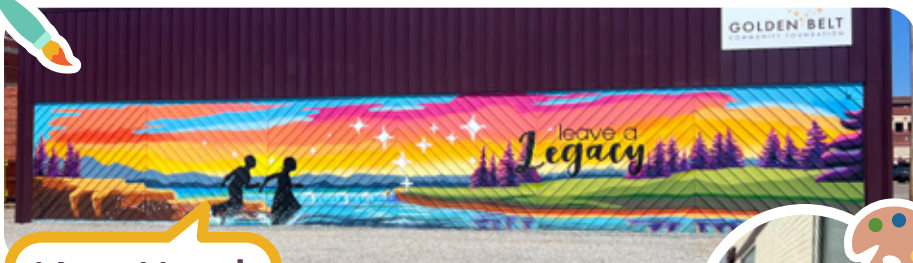


The incredible ladies of Breast Friends have done it again! Through raffles, bake sales, and lots of love, they've raised funds to support the Heartland Cancer Patient Care and Support Endowment Fund, which provides support for cancer patients in Barton, Pawnee, Rush, and Stafford counties.

What a fun and inspiring group to be around! Thank you for making a difference in the lives of local cancer patients.

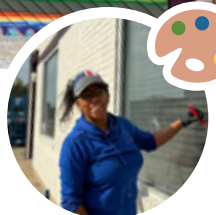


If you or someone you know could benefit from this fund, applications are available at the Golden Belt Community Foundation.



New Mural Complete in Great Bend

Local artist Melanie Ryan painted this mural on the Golden Belt Community Foundation's building in August 2024.



LAUNDRY love

OCTOBER 19, 2024



75 Individuals

32 Families

153 Loads of Laundry



It was another busy month for Laundry Love with **32 families** putting this service to use. Thank you Golden Belt Community Foundation for sponsoring!



UNITED WAY OF
CENTRAL KANSAS



County Fairs Offer Opportunities to Connect



This summer, our Executive Director joined in the fun at the Barton, Rush, Pawnee and Stafford county fairs, connecting with community members of all ages. Amid the classic fair sounds of laughter, livestock, and lemonade, we handed out prizes and shared stories with local families, youth, and leaders.

These events were a wonderful reminder of what makes our region special—neighbors coming together to celebrate, support, and strengthen their communities. Being part of the fair is just one more way we stay rooted in the places we serve.



Fair visitors won prizes and learned about how we support our communities.



New Thermal Cameras Enhance Safety



Thermal cameras are helping improve safety for officers and members of the Rush County community.



This year, the Golden Belt Community Foundation was proud to partner with the Rush County Sheriff's Department to support the purchase of two Night Ride PRO-SL Thermal Cameras. This advanced technology enhances visibility during nighttime operations, helping keep both officers and community members safe. By investing in tools that strengthen public safety, the Foundation reaffirms its commitment to the well-being of our communities. It's one more way the Golden Belt Community Foundation helps ensure Rush County remains a place where people feel secure, supported, and cared for.



helping women

IN BARTON COUNTY

Through donations, the Prairie Godmother Fund provides grants to improve the health and well-being of Barton County women by providing hardship assistance for a basic need not met by other resources.

2024

11 GRANTS

TOTAL OF
\$4,946

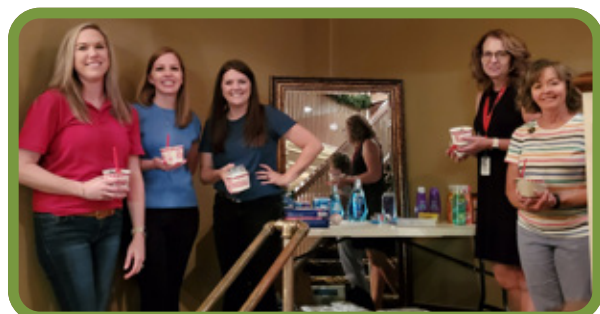
Vehicle repairs, tires, laptop (education/classes), eyeglasses, lift chair, stove/oven



Summer Sweetness

The Prairie Godmother's members organized a "Summer Sweetness" event where they served Freddy's Frozen

Custard complete with toppings and collected donations for local partner agencies. Members brought paper towels, toilet paper and women's hygiene items. These items were distributed around Barton County to nonprofit agencies.



Left to right - Kristin McAllister, Regan Reif, Teresa Powelson, Jillane Koochel and Sonya Rein

2025 SO FAR

4 GRANTS

TOTAL OF
\$1,620

Repairs to furnace, washer & dryer, vehicle repairs, tires



Haley Gleason
and Regan Reif

Fall Fling Ladies Night

Guests at the Fall Fling Ladies Night had so much fun crafting their very own fall centerpiece just in time for Thanksgiving, thanks to the expert instruction from the team at Yours Truly, LLC in downtown Great Bend.

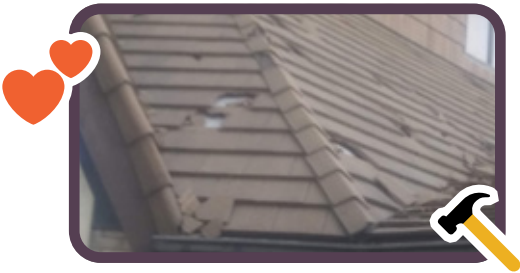
"It was a wonderful event to benefit a great organization!" said Liz Shartz.



Community, Faith, and Philanthropy in Action

Years ago, a local family partnered with the Golden Belt Community Foundation to create a donor advised fund—a simple, flexible way to give back to the causes they love. They didn’t know exactly what the future would hold, but they did know one thing: they wanted to make a lasting impact in the community that raised them.

In 2024, that vision became beautifully tangible. When First Christian Church in Great Bend faced an urgent need for major roof repairs, this family saw an opportunity to step in. Through their donor advised fund, they recommended a \$50,000 grant—providing the



A donor advised fund made it easy to help First Christian Church with roof repairs.

critical funding needed to preserve a space that has long served as a cornerstone of faith, support, and community in Great Bend.

“Having a donor advised fund meant we were ready when the need arose,” the family shared. “We didn’t have to wait or wonder how to help—we had already prepared to give.”

Donor advised funds offer the joy of giving made simple. Year after year, fundholders can support the organizations and projects that matter most to them—whether it’s a local church roof, a youth program, or a scholarship fund.

For this family, the gift was more than financial. It was a reflection of their values, their roots, and their hope for the future of Great Bend.

What is a Donor Advised Fund?

A Donor Advised Fund (DAF) is a flexible giving account at a community foundation that allows individuals or families to recommend charitable grants over time, while the foundation manages the investments and paperwork.

MEALS ON WHEELS



\$10,000 for the meal program at Welcome Inn Leisure Center, Larned.



One month of meals covered for Meals on Wheels Barton County.



our team



**JASON
MURRAY**

Executive Director



**LINDA
CHISHOLM**

Administrative Assistant



**TERESA
POWELSON**

Program Officer



**MACKENZIE
MITCHELL**

*Development &
Communications
Coordinator*

Golden Belt Community Foundation

P.O. Box 1911
1307 Williams Street
Great Bend, KS 67530



620.792.3000
gbcf@goldenbeltcf.org



Golden Belt Community Foundation has recently been accredited with National Standards for U.S. Community Foundations – the highest standards for philanthropic excellence.



Founding Donors

- ✦ Adams Brown Beran & Ball Chtd.
- ✦ American State Bank & Trust Company, N.A.
- ✦ Dr. Mike and Sally Allison
- ✦ Jim and Kathi Armatys
- ✦ Rick and Lois Ball
- ✦ Lee Borck
- ✦ Kathy Borck
- ✦ Don and Catherine Brening
- ✦ Mark and Melanie Calcara
- ✦ City of Great Bend
- ✦ Community Bank of the Midwest
- ✦ CPI Qualified Plan Consultants, Inc.
- ✦ Bob and Carol Dema
- ✦ George and Helen Drake
- ✦ Ellinwood Packing Plant, Inc.
- ✦ Farmers Bank & Trust, N.A.
- ✦ First State Bank of Larned
- ✦ John and Nancy Francis
- ✦ Merlin and Nelva Grimes
- ✦ Les and Carol Hopkins
- ✦ Wayne and Karen Keller Becker
- ✦ Don and Karla Kirkman
- ✦ Landmark National Bank
- ✦ Dr. Greg Langen and Chad and Jeremiah Langen
- ✦ Jerry and Linda Marmie
- ✦ Dr. Robert Wilson and Lynn Wilson
- ✦ M.E. and Margie Marmie
- ✦ Dr. Roger and Laina Marshall
- ✦ Keith and Marian Mull
- ✦ Andrew and Megan Murphy
- ✦ Roger and Mary Lou Murphy
- ✦ Max Nichols
- ✦ Eddie Nichols
- ✦ Larry and Kathy Schugart
- ✦ Dr. Perry and Krista Smith
- ✦ Surgical & Diagnostic Center of Great Bend
- ✦ In Memory of Hody and Ann Thies
- ✦ Mike and Mary Walts

help us

MAKE MAGIC

Learn more about our mission, how to
donate and find ways to get involved.

✦ VISIT GOLDENBELTCF.ORG ✦

**Golden Belt
Community Foundation**

P.O. Box 1911
1307 Williams Street
Great Bend, KS 67530



620.792.3000

gbcf@goldenbeltcf.org

GOLDEN BELT
COMMUNITY FOUNDATION

P.O. Box 1911
Great Bend, KS 67530